

NuCORE

NuCORE is the clear choice for value and performance in heat transfer products. ETP Thermal Dynamics offers this least-cost approach by replacing the core matrix (the part that cools) while retaining the original components. The result is a fully reliable “like-new” product at a fraction of the cost of new replacement.



Exploded View E170 Heat Exchanger

NuCORE units feature an entirely new vacuum-brazed core matrix, free from welding, brazing or epoxy that characterizes “repaired” cores. NuCORE delivers a “like-new” component that brings you the same confidence and reliability that you would expect from factory part.

The various ETP repair programs create reliable, cost effective and quality repair for air carriers, operators, and aircraft owners worldwide. The Repair Specification(s) afford the customer the opportunity to reduce maintenance cost while improving MTBF.



NuCore units are fitted on ALL commercial aircraft: Airbus, ATR, Boeing, Bombardier, Embraer & Fokker.

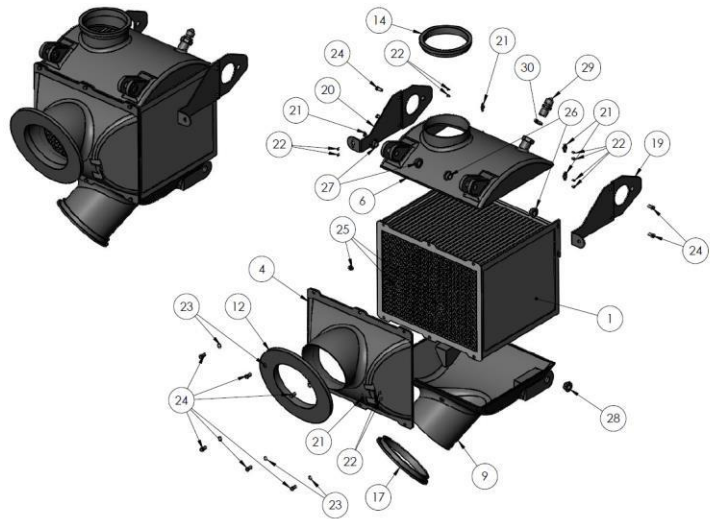
ENGINEERING & TECHNOLOGIES

ETP's engineering team develops innovative solutions, providing a variety of design, analysis and structural test engineering services, product development, R&D, qualification, certification for military and commercial customers. ETP offers a wide variety of DER repairs designed to reduce cost and improve reliability. ETP continues to create advancements/specialized repair techniques and solutions to complex manufacturing challenges. Offering our customers, a cost-effective alternative to new-part replacement remains the core objective of our business!

ETP Thermal Dynamics differentiates itself through consistent Research & Development efforts creating innovative solutions to engineering design & manufacturing challenges.

Customers are Offered:

- Improved product reliability
- Innovative manufacturing & repair solutions
- Reduce operator maintenance cost
- Reduce acquisition cost
- Reduced MTBF (mean time before failure)
- +200 DER Specialized Repair Programs
- Rapid Turn-Around-Time (TAT)
- Fixed Flat Rate Price Schedules
- 24/7 AOG
- Customer first philosophy



Capabilities:

- 3D Scanning
- Material Analysis
- Tool Design
- Repair Development
- Automation
- Build-to-Spec
- Thermal Management
- RS/DER

